

RoHS TEST REPORT

Applicant : Cannapresso Health INC.

Address : 202 North California Ave, City of Industry, CA. 91744 U.S.A.

Manufacturer : Cannapresso Health INC.

Address : 202 North California Ave, City of Industry, CA. 91744 U.S.A.

The following sample(s) was /were submitted and identified on behalf of the clients as :

Sample Name : Portable Mesh Nebulizer

Sample Model : Air Pro, Air Pro Plus, Air Pro 1, Air Pro 2, Air Pro 3, Air Pro 4, Air Pro 5, Air Pro 6, Air Pro 7, Air Pro 8, Air Pro 9, Air Pro 10, Air Mask 1, Air Mask 2, Air Mask 3



Trademark:

Sample Received Date : Sept. 18, 2017

Testing Period : Sept. 19, 2017 To Sept. 20, 2017

Test Requested : Selected test(s) as requested by client

Test Method : Please refer to next page(s).

Test Result : Please refer to next page(s).

Conclusion : Based on the performed tests on submitted sample(s), the results of Lead, Mercury, Cadmium, Hexavalent chromium, Polybrominated biphenyls (PBBs), Polybrominated diphenyl ethers (PBDEs) and Phthalates such as Bis(2-ethylhexyl) phthalate (DEHP) , Butyl benzyl phthalate (BBP), Dibutyl phthalate (DBP) , and Diisobutyl phthalate (DIBP) comply with the limits as set by RoHS Directive (EU) 2015/863 amending Annex II to Directive 2011/65/EU.

Tested By:

Date: Sept. 21, 2017



Sample Description:

No.	Name
1	PCB
2	IC
3	SMD Resistor
4	SMD Capacitor
5	Iron
6	Screw
7	White Plastic
8	Black Plastic
9	Transparent Plastic
10	Tin
11	Red Wire
12	Black Wire
13	White Wire
14	Yellow Wire
15	SMD Diode
16	SMD Transistor
17	LED
18	Inductor
19	Battery
20	Copper
21	Green Plastic
22	Gray Plastic

Test Result(No.1):

Test Item(s)	Unit	Test Method (Reference)	Result	MDL	Limit
Cadmium(Cd)	mg/kg	IEC 62321-5:2013, ICP-OES	N.D.	2	100
Lead(Pb)	mg/kg	IEC 62321-5:2013, ICP-OES	N.D.	2	1000
Mercury(Hg)	mg/kg	IEC 62321-4:2013, ICP-OES	N.D.	2	1000
Hexavalent Chromium(CrVI)	mg/kg	IEC 62321:2008, UV-Vis	N.D.	2	1000
Sum of PBBs	mg/kg	IEC 62321-6:2015, GC-MS	N.D.	--	1000
Monobromobiphenyl	mg/kg	IEC 62321-6:2015, GC-MS	N.D.	5	--
Dibromobiphenyl	mg/kg	IEC 62321-6:2015, GC-MS	N.D.	5	--
Tribromobiphenyl	mg/kg	IEC 62321-6:2015, GC-MS	N.D.	5	--
Tetrabromobiphenyl	mg/kg	IEC 62321-6:2015, GC-MS	N.D.	5	--
Pentabromobiphenyl	mg/kg	IEC 62321-6:2015, GC-MS	N.D.	5	--
Hexabromobiphenyl	mg/kg	IEC 62321-6:2015, GC-MS	N.D.	5	--
Heptabromobiphenyl	mg/kg	IEC 62321-6:2015, GC-MS	N.D.	5	--
Octabromobiphenyl	mg/kg	IEC 62321-6:2015, GC-MS	N.D.	5	--
Nonabromobiphenyl	mg/kg	IEC 62321-6:2015, GC-MS	N.D.	5	--
Decabromobiphenyl	mg/kg	IEC 62321-6:2015, GC-MS	N.D.	5	--
Sum of PBDEs	mg/kg	IEC 62321-6:2015, GC-MS	N.D.	5	1000
Monobromodiphenyl ether	mg/kg	IEC 62321-6:2015, GC-MS	N.D.	5	--
Dibromodiphenyl ether	mg/kg	IEC 62321-6:2015, GC-MS	N.D.	5	--
Tribromodiphenyl ether	mg/kg	IEC 62321-6:2015, GC-MS	N.D.	5	--
Tetrabromodiphenyl ether	mg/kg	IEC 62321-6:2015, GC-MS	N.D.	5	--
Pentabromodiphenyl ether	mg/kg	IEC 62321-6:2015, GC-MS	N.D.	5	--
Hexabromodiphenyl ether	mg/kg	IEC 62321-6:2015, GC-MS	N.D.	5	--
Heptabromodiphenyl ether	mg/kg	IEC 62321-6:2015, GC-MS	N.D.	5	--
Octabromodiphenyl ether	mg/kg	IEC 62321-6:2015, GC-MS	N.D.	5	--
Nonabromodiphenyl ether	mg/kg	IEC 62321-6:2015, GC-MS	N.D.	5	--
--Decabromodiphenyl ether	mg/kg	IEC 62321-6:2015, GC-MS	N.D.	5	--
Dibutyl Phthalate(DBP)	mg/kg	IEC 62321-8 (111/321/CD), GC-MS	N.D.	50	1000
Benzylbutyl Phthalate(BBP)	mg/kg	IEC 62321-8 (111/321/CD), GC-MS	N.D.	50	1000
Di-(2-ethylhexyl) Phthalate(DEHP)	mg/kg	IEC 62321-8 (111/321/CD), GC-MS	N.D.	50	1000

Diisobutyl phthalate (DIBP)	mg/kg	IEC 62321-8 (111/321/CD), GC-MS	N.D.	50	1000
-----------------------------	-------	---------------------------------	------	----	------

Test Result(No.2):

Test Item(s)	Unit	Test Method (Reference)	Result	MDL	Limit
Cadmium(Cd)	mg/kg	IEC 62321-5:2013, ICP-OES	N.D.	2	100
Lead(Pb)	mg/kg	IEC 62321-5:2013, ICP-OES	N.D.	2	1000
Mercury(Hg)	mg/kg	IEC 62321-4:2013, ICP-OES	N.D.	2	1000
Hexavalent Chromium(CrVI)	mg/kg	IEC 62321:2008, UV-Vis	N.D.	2	1000
Sum of PBBs	mg/kg	IEC 62321-6:2015, GC-MS	N.D.	--	1000
Monobromobiphenyl	mg/kg	IEC 62321-6:2015, GC-MS	N.D.	5	--
Dibromobiphenyl	mg/kg	IEC 62321-6:2015, GC-MS	N.D.	5	--
Tribromobiphenyl	mg/kg	IEC 62321-6:2015, GC-MS	N.D.	5	--
Tetrabromobiphenyl	mg/kg	IEC 62321-6:2015, GC-MS	N.D.	5	--
Pentabromobiphenyl	mg/kg	IEC 62321-6:2015, GC-MS	N.D.	5	--
Hexabromobiphenyl	mg/kg	IEC 62321-6:2015, GC-MS	N.D.	5	--
Heptabromobiphenyl	mg/kg	IEC 62321-6:2015, GC-MS	N.D.	5	--
Octabromobiphenyl	mg/kg	IEC 62321-6:2015, GC-MS	N.D.	5	--
Nonabromobiphenyl	mg/kg	IEC 62321-6:2015, GC-MS	N.D.	5	--
Decabromobiphenyl	mg/kg	IEC 62321-6:2015, GC-MS	N.D.	5	--
Sum of PBDEs	mg/kg	IEC 62321-6:2015, GC-MS	N.D.	5	1000
Monobromodiphenyl ether	mg/kg	IEC 62321-6:2015, GC-MS	N.D.	5	--
Dibromodiphenyl ether	mg/kg	IEC 62321-6:2015, GC-MS	N.D.	5	--
Tribromodiphenyl ether	mg/kg	IEC 62321-6:2015, GC-MS	N.D.	5	--
Tetrabromodiphenyl ether	mg/kg	IEC 62321-6:2015, GC-MS	N.D.	5	--
Pentabromodiphenyl ether	mg/kg	IEC 62321-6:2015, GC-MS	N.D.	5	--
Hexabromodiphenyl ether	mg/kg	IEC 62321-6:2015, GC-MS	N.D.	5	--
Heptabromodiphenyl ether	mg/kg	IEC 62321-6:2015, GC-MS	N.D.	5	--
Octabromodiphenyl ether	mg/kg	IEC 62321-6:2015, GC-MS	N.D.	5	--
Nonabromodiphenyl ether	mg/kg	IEC 62321-6:2015, GC-MS	N.D.	5	--
--Decabromodiphenyl ether	mg/kg	IEC 62321-6:2015, GC-MS	N.D.	5	--
Dibutyl Phthalate(DBP)	mg/kg	IEC 62321-8 (111/321/CD), GC-MS	N.D.	50	1000

Benzylbutyl Phthalate(BBP)	mg/kg	IEC 62321-8 (111/321/CD), GC-MS	N.D.	50	1000
Di-(2-ethylhexyl) Phthalate(DEHP)	mg/kg	IEC 62321-8 (111/321/CD), GC-MS	N.D.	50	1000
Diisobutyl phthalate (DIBP)	mg/kg	IEC 62321-8 (111/321/CD), GC-MS	N.D.	50	1000

Test Result(No.3):

Test Item(s)	Unit	Test Method (Reference)	Result	MDL	Limit
Cadmium(Cd)	mg/kg	IEC 62321-5:2013, ICP-OES	N.D.	2	100
Lead(Pb)	mg/kg	IEC 62321-5:2013, ICP-OES	N.D.	2	1000
Mercury(Hg)	mg/kg	IEC 62321-4:2013, ICP-OES	N.D.	2	1000
Hexavalent Chromium(CrVI)	mg/kg	IEC 62321:2008, UV-Vis	N.D.	2	1000
Sum of PBBs	mg/kg	IEC 62321-6:2015, GC-MS	N.D.	--	1000
Monobromobiphenyl	mg/kg	IEC 62321-6:2015, GC-MS	N.D.	5	--
Dibromobiphenyl	mg/kg	IEC 62321-6:2015, GC-MS	N.D.	5	--
Tribromobiphenyl	mg/kg	IEC 62321-6:2015, GC-MS	N.D.	5	--
Tetrabromobiphenyl	mg/kg	IEC 62321-6:2015, GC-MS	N.D.	5	--
Pentabromobiphenyl	mg/kg	IEC 62321-6:2015, GC-MS	N.D.	5	--
Hexabromobiphenyl	mg/kg	IEC 62321-6:2015, GC-MS	N.D.	5	--
Heptabromobiphenyl	mg/kg	IEC 62321-6:2015, GC-MS	N.D.	5	--
Octabromobiphenyl	mg/kg	IEC 62321-6:2015, GC-MS	N.D.	5	--
Nonabromobiphenyl	mg/kg	IEC 62321-6:2015, GC-MS	N.D.	5	--
Decabromobiphenyl	mg/kg	IEC 62321-6:2015, GC-MS	N.D.	5	--
Sum of PBDEs	mg/kg	IEC 62321-6:2015, GC-MS	N.D.	5	1000
Monobromodiphenyl ether	mg/kg	IEC 62321-6:2015, GC-MS	N.D.	5	--
Dibromodiphenyl ether	mg/kg	IEC 62321-6:2015, GC-MS	N.D.	5	--
Tribromodiphenyl ether	mg/kg	IEC 62321-6:2015, GC-MS	N.D.	5	--
Tetrabromodiphenyl ether	mg/kg	IEC 62321-6:2015, GC-MS	N.D.	5	--
Pentabromodiphenyl ether	mg/kg	IEC 62321-6:2015, GC-MS	N.D.	5	--
Hexabromodiphenyl ether	mg/kg	IEC 62321-6:2015, GC-MS	N.D.	5	--
Heptabromodiphenyl ether	mg/kg	IEC 62321-6:2015, GC-MS	N.D.	5	--
Octabromodiphenyl ether	mg/kg	IEC 62321-6:2015, GC-MS	N.D.	5	--
Nonabromodiphenyl ether	mg/kg	IEC 62321-6:2015, GC-MS	N.D.	5	--

--Decabromodiphenyl ether	mg/kg	IEC 62321-6:2015, GC-MS	N.D.	5	--
Dibutyl Phthalate(DBP)	mg/kg	IEC 62321-8 (111/321/CD), GC-MS	N.D.	50	1000
Benzylbutyl Phthalate(BBP)	mg/kg	IEC 62321-8 (111/321/CD), GC-MS	N.D.	50	1000
Di-(2-ethylhexyl) Phthalate(DEHP)	mg/kg	IEC 62321-8 (111/321/CD), GC-MS	N.D.	50	1000
Diisobutyl phthalate (DIBP)	mg/kg	IEC 62321-8 (111/321/CD), GC-MS	N.D.	50	1000

Test Result(No.4):

Test Item(s)	Unit	Test Method (Reference)	Result	MDL	Limit
Cadmium(Cd)	mg/kg	IEC 62321-5:2013, ICP-OES	N.D.	2	100
Lead(Pb)	mg/kg	IEC 62321-5:2013, ICP-OES	N.D.	2	1000
Mercury(Hg)	mg/kg	IEC 62321-4:2013, ICP-OES	N.D.	2	1000
Hexavalent Chromium(CrVI)	mg/kg	IEC 62321:2008, UV-Vis	N.D.	2	1000
Sum of PBBs	mg/kg	IEC 62321-6:2015, GC-MS	N.D.	--	1000
Monobromobiphenyl	mg/kg	IEC 62321-6:2015, GC-MS	N.D.	5	--
Dibromobiphenyl	mg/kg	IEC 62321-6:2015, GC-MS	N.D.	5	--
Tribromobiphenyl	mg/kg	IEC 62321-6:2015, GC-MS	N.D.	5	--
Tetrabromobiphenyl	mg/kg	IEC 62321-6:2015, GC-MS	N.D.	5	--
Pentabromobiphenyl	mg/kg	IEC 62321-6:2015, GC-MS	N.D.	5	--
Hexabromobiphenyl	mg/kg	IEC 62321-6:2015, GC-MS	N.D.	5	--
Heptabromobiphenyl	mg/kg	IEC 62321-6:2015, GC-MS	N.D.	5	--
Octabromobiphenyl	mg/kg	IEC 62321-6:2015, GC-MS	N.D.	5	--
Nonabromobiphenyl	mg/kg	IEC 62321-6:2015, GC-MS	N.D.	5	--
Decabromobiphenyl	mg/kg	IEC 62321-6:2015, GC-MS	N.D.	5	--
Sum of PBDEs	mg/kg	IEC 62321-6:2015, GC-MS	N.D.	5	1000
Monobromodiphenyl ether	mg/kg	IEC 62321-6:2015, GC-MS	N.D.	5	--
Dibromodiphenyl ether	mg/kg	IEC 62321-6:2015, GC-MS	N.D.	5	--
Tribromodiphenyl ether	mg/kg	IEC 62321-6:2015, GC-MS	N.D.	5	--
Tetrabromodiphenyl ether	mg/kg	IEC 62321-6:2015, GC-MS	N.D.	5	--
Pentabromodiphenyl ether	mg/kg	IEC 62321-6:2015, GC-MS	N.D.	5	--
Hexabromodiphenyl ether	mg/kg	IEC 62321-6:2015, GC-MS	N.D.	5	--
Heptabromodiphenyl ether	mg/kg	IEC 62321-6:2015, GC-MS	N.D.	5	--

Octabromodiphenyl ether	mg/kg	IEC 62321-6:2015, GC-MS	N.D.	5	--
Nonabromodiphenyl ether	mg/kg	IEC 62321-6:2015, GC-MS	N.D.	5	--
--Decabromodiphenyl ether	mg/kg	IEC 62321-6:2015, GC-MS	N.D.	5	--
Dibutyl Phthalate(DBP)	mg/kg	IEC 62321-8 (111/321/CD), GC-MS	N.D.	50	1000
Benzylbutyl Phthalate(BBP)	mg/kg	IEC 62321-8 (111/321/CD), GC-MS	N.D.	50	1000
Di-(2-ethylhexyl) Phthalate(DEHP)	mg/kg	IEC 62321-8 (111/321/CD), GC-MS	N.D.	50	1000
Diisobutyl phthalate (DIBP)	mg/kg	IEC 62321-8 (111/321/CD), GC-MS	N.D.	50	1000

Test Result(No.5):

Test Item(s)	Unit	Test Method (Reference)	Result	MDL	Limit
Cadmium(Cd)	mg/kg	IEC 62321-5:2013, ICP-OES	N.D.	2	100
Lead(Pb)	mg/kg	IEC 62321-5:2013, ICP-OES	N.D.	2	1000
Mercury(Hg)	mg/kg	IEC 62321-4:2013, ICP-OES	N.D.	2	1000
Hexavalent Chromium(CrVI)	mg/kg	IEC 62321:2008, UV-Vis	N.D.	2	1000
Sum of PBBs	mg/kg	IEC 62321-6:2015, GC-MS	N.A.	--	1000
Monobromobiphenyl	mg/kg	IEC 62321-6:2015, GC-MS	N.D.	5	--
Dibromobiphenyl	mg/kg	IEC 62321-6:2015, GC-MS	N.D.	5	--
Tribromobiphenyl	mg/kg	IEC 62321-6:2015, GC-MS	N.D.	5	--
Tetrabromobiphenyl	mg/kg	IEC 62321-6:2015, GC-MS	N.D.	5	--
Pentabromobiphenyl	mg/kg	IEC 62321-6:2015, GC-MS	N.D.	5	--
Hexabromobiphenyl	mg/kg	IEC 62321-6:2015, GC-MS	N.D.	5	--
Heptabromobiphenyl	mg/kg	IEC 62321-6:2015, GC-MS	N.D.	5	--
Octabromobiphenyl	mg/kg	IEC 62321-6:2015, GC-MS	N.D.	5	--
Nonabromobiphenyl	mg/kg	IEC 62321-6:2015, GC-MS	N.D.	5	--
Decabromobiphenyl	mg/kg	IEC 62321-6:2015, GC-MS	N.D.	5	--
Sum of PBDEs	mg/kg	IEC 62321-6:2015, GC-MS	N.A.	5	1000
Monobromodiphenyl ether	mg/kg	IEC 62321-6:2015, GC-MS	N.D.	5	--
Dibromodiphenyl ether	mg/kg	IEC 62321-6:2015, GC-MS	N.D.	5	--
Tribromodiphenyl ether	mg/kg	IEC 62321-6:2015, GC-MS	N.D.	5	--
Tetrabromodiphenyl ether	mg/kg	IEC 62321-6:2015, GC-MS	N.D.	5	--
Pentabromodiphenyl ether	mg/kg	IEC 62321-6:2015, GC-MS	N.D.	5	--

Hexabromodiphenyl ether	mg/kg	IEC 62321-6:2015, GC-MS	N.D.	5	--
Heptabromodiphenyl ether	mg/kg	IEC 62321-6:2015, GC-MS	N.D.	5	--
Octabromodiphenyl ether	mg/kg	IEC 62321-6:2015, GC-MS	N.D.	5	--
Nonabromodiphenyl ether	mg/kg	IEC 62321-6:2015, GC-MS	N.D.	5	--
--Decabromodiphenyl ether	mg/kg	IEC 62321-6:2015, GC-MS	N.D.	5	--
Dibutyl Phthalate(DBP)	mg/kg	IEC 62321-8 (111/321/CD), GC-MS	N.A.	50	1000
Benzylbutyl Phthalate(BBP)	mg/kg	IEC 62321-8 (111/321/CD), GC-MS	N.A.	50	1000
Di-(2-ethylhexyl) Phthalate(DEHP)	mg/kg	IEC 62321-8 (111/321/CD), GC-MS	N.A.	50	1000
Diisobutyl phthalate (DIBP)	mg/kg	IEC 62321-8 (111/321/CD), GC-MS	N.A.	50	1000

Test Result(No.6):

Test Item(s)	Unit	Test Method (Reference)	Result	MDL	Limit
Cadmium(Cd)	mg/kg	IEC 62321-5:2013, ICP-OES	N.D.	2	100
Lead(Pb)	mg/kg	IEC 62321-5:2013, ICP-OES	N.D.	2	1000
Mercury(Hg)	mg/kg	IEC 62321-4:2013, ICP-OES	N.D.	2	1000
Hexavalent Chromium(CrVI)	mg/kg	IEC 62321:2008, UV-Vis	N.D.	2	1000
Sum of PBBs	mg/kg	IEC 62321-6:2015, GC-MS	N.A.	--	1000
Monobromobiphenyl	mg/kg	IEC 62321-6:2015, GC-MS	N.D.	5	--
Dibromobiphenyl	mg/kg	IEC 62321-6:2015, GC-MS	N.D.	5	--
Tribromobiphenyl	mg/kg	IEC 62321-6:2015, GC-MS	N.D.	5	--
Tetrabromobiphenyl	mg/kg	IEC 62321-6:2015, GC-MS	N.D.	5	--
Pentabromobiphenyl	mg/kg	IEC 62321-6:2015, GC-MS	N.D.	5	--
Hexabromobiphenyl	mg/kg	IEC 62321-6:2015, GC-MS	N.D.	5	--
Heptabromobiphenyl	mg/kg	IEC 62321-6:2015, GC-MS	N.D.	5	--
Octabromobiphenyl	mg/kg	IEC 62321-6:2015, GC-MS	N.D.	5	--
Nonabromobiphenyl	mg/kg	IEC 62321-6:2015, GC-MS	N.D.	5	--
Decabromobiphenyl	mg/kg	IEC 62321-6:2015, GC-MS	N.D.	5	--
Sum of PBDEs	mg/kg	IEC 62321-6:2015, GC-MS	N.A.	5	1000
Monobromodiphenyl ether	mg/kg	IEC 62321-6:2015, GC-MS	N.D.	5	--
Dibromodiphenyl ether	mg/kg	IEC 62321-6:2015, GC-MS	N.D.	5	--
Tribromodiphenyl ether	mg/kg	IEC 62321-6:2015, GC-MS	N.D.	5	--

Tetrabromodiphenyl ether	mg/kg	IEC 62321-6:2015, GC-MS	N.D.	5	--
Pentabromodiphenyl ether	mg/kg	IEC 62321-6:2015, GC-MS	N.D.	5	--
Hexabromodiphenyl ether	mg/kg	IEC 62321-6:2015, GC-MS	N.D.	5	--
Heptabromodiphenyl ether	mg/kg	IEC 62321-6:2015, GC-MS	N.D.	5	--
Octabromodiphenyl ether	mg/kg	IEC 62321-6:2015, GC-MS	N.D.	5	--
Nonabromodiphenyl ether	mg/kg	IEC 62321-6:2015, GC-MS	N.D.	5	--
--Decabromodiphenyl ether	mg/kg	IEC 62321-6:2015, GC-MS	N.D.	5	--
Dibutyl Phthalate(DBP)	mg/kg	IEC 62321-8 (111/321/CD), GC-MS	N.A.	50	1000
Benzylbutyl Phthalate(BBP)	mg/kg	IEC 62321-8 (111/321/CD), GC-MS	N.A.	50	1000
Di-(2-ethylhexyl) Phthalate(DEHP)	mg/kg	IEC 62321-8 (111/321/CD), GC-MS	N.A.	50	1000
Diisobutyl phthalate (DIBP)	mg/kg	IEC 62321-8 (111/321/CD), GC-MS	N.A.	50	1000

Test Result(No.7):

Test Item(s)	Unit	Test Method (Reference)	Result	MDL	Limit
Cadmium(Cd)	mg/kg	IEC 62321-5:2013, ICP-OES	N.D.	2	100
Lead(Pb)	mg/kg	IEC 62321-5:2013, ICP-OES	N.D.	2	1000
Mercury(Hg)	mg/kg	IEC 62321-4:2013, ICP-OES	N.D.	2	1000
Hexavalent Chromium(CrVI)	mg/kg	IEC 62321:2008, UV-Vis	N.D.	2	1000
Sum of PBBs	mg/kg	IEC 62321-6:2015, GC-MS	N.D.	--	1000
Monobromobiphenyl	mg/kg	IEC 62321-6:2015, GC-MS	N.D.	5	--
Dibromobiphenyl	mg/kg	IEC 62321-6:2015, GC-MS	N.D.	5	--
Tribromobiphenyl	mg/kg	IEC 62321-6:2015, GC-MS	N.D.	5	--
Tetrabromobiphenyl	mg/kg	IEC 62321-6:2015, GC-MS	N.D.	5	--
Pentabromobiphenyl	mg/kg	IEC 62321-6:2015, GC-MS	N.D.	5	--
Hexabromobiphenyl	mg/kg	IEC 62321-6:2015, GC-MS	N.D.	5	--
Heptabromobiphenyl	mg/kg	IEC 62321-6:2015, GC-MS	N.D.	5	--
Octabromobiphenyl	mg/kg	IEC 62321-6:2015, GC-MS	N.D.	5	--
Nonabromobiphenyl	mg/kg	IEC 62321-6:2015, GC-MS	N.D.	5	--
Decabromobiphenyl	mg/kg	IEC 62321-6:2015, GC-MS	N.D.	5	--
Sum of PBDEs	mg/kg	IEC 62321-6:2015, GC-MS	N.D.	5	1000
Monobromodiphenyl ether	mg/kg	IEC 62321-6:2015, GC-MS	N.D.	5	--

Dibromodiphenyl ether	mg/kg	IEC 62321-6:2015, GC-MS	N.D.	5	--
Tribromodiphenyl ether	mg/kg	IEC 62321-6:2015, GC-MS	N.D.	5	--
Tetrabromodiphenyl ether	mg/kg	IEC 62321-6:2015, GC-MS	N.D.	5	--
Pentabromodiphenyl ether	mg/kg	IEC 62321-6:2015, GC-MS	N.D.	5	--
Hexabromodiphenyl ether	mg/kg	IEC 62321-6:2015, GC-MS	N.D.	5	--
Heptabromodiphenyl ether	mg/kg	IEC 62321-6:2015, GC-MS	N.D.	5	--
Octabromodiphenyl ether	mg/kg	IEC 62321-6:2015, GC-MS	N.D.	5	--
Nonabromodiphenyl ether	mg/kg	IEC 62321-6:2015, GC-MS	N.D.	5	--
--Decabromodiphenyl ether	mg/kg	IEC 62321-6:2015, GC-MS	N.D.	5	--
Dibutyl Phthalate(DBP)	mg/kg	IEC 62321-8 (111/321/CD), GC-MS	N.D.	50	1000
Benzylbutyl Phthalate(BBP)	mg/kg	IEC 62321-8 (111/321/CD), GC-MS	N.D.	50	1000
Di-(2-ethylhexyl) Phthalate(DEHP)	mg/kg	IEC 62321-8 (111/321/CD), GC-MS	N.D.	50	1000
Diisobutyl phthalate (DIBP)	mg/kg	IEC 62321-8 (111/321/CD), GC-MS	N.D.	50	1000

Test Result(No.8):

Test Item(s)	Unit	Test Method (Reference)	Result	MDL	Limit
Cadmium(Cd)	mg/kg	IEC 62321-5:2013, ICP-OES	N.D.	2	100
Lead(Pb)	mg/kg	IEC 62321-5:2013, ICP-OES	N.D.	2	1000
Mercury(Hg)	mg/kg	IEC 62321-4:2013, ICP-OES	N.D.	2	1000
Hexavalent Chromium(CrVI)	mg/kg	IEC 62321:2008, UV-Vis	N.D.	2	1000
Sum of PBBs	mg/kg	IEC 62321-6:2015, GC-MS	N.D.	--	1000
Monobromobiphenyl	mg/kg	IEC 62321-6:2015, GC-MS	N.D.	5	--
Dibromobiphenyl	mg/kg	IEC 62321-6:2015, GC-MS	N.D.	5	--
Tribromobiphenyl	mg/kg	IEC 62321-6:2015, GC-MS	N.D.	5	--
Tetrabromobiphenyl	mg/kg	IEC 62321-6:2015, GC-MS	N.D.	5	--
Pentabromobiphenyl	mg/kg	IEC 62321-6:2015, GC-MS	N.D.	5	--
Hexabromobiphenyl	mg/kg	IEC 62321-6:2015, GC-MS	N.D.	5	--
Heptabromobiphenyl	mg/kg	IEC 62321-6:2015, GC-MS	N.D.	5	--
Octabromobiphenyl	mg/kg	IEC 62321-6:2015, GC-MS	N.D.	5	--
Nonabromobiphenyl	mg/kg	IEC 62321-6:2015, GC-MS	N.D.	5	--

Decabromobiphenyl	mg/kg	IEC 62321-6:2015, GC-MS	N.D.	5	--
Sum of PBDEs	mg/kg	IEC 62321-6:2015, GC-MS	N.D.	5	1000
Monobromodiphenyl ether	mg/kg	IEC 62321-6:2015, GC-MS	N.D.	5	--
Dibromodiphenyl ether	mg/kg	IEC 62321-6:2015, GC-MS	N.D.	5	--
Tribromodiphenyl ether	mg/kg	IEC 62321-6:2015, GC-MS	N.D.	5	--
Tetrabromodiphenyl ether	mg/kg	IEC 62321-6:2015, GC-MS	N.D.	5	--
Pentabromodiphenyl ether	mg/kg	IEC 62321-6:2015, GC-MS	N.D.	5	--
Hexabromodiphenyl ether	mg/kg	IEC 62321-6:2015, GC-MS	N.D.	5	--
Heptabromodiphenyl ether	mg/kg	IEC 62321-6:2015, GC-MS	N.D.	5	--
Octabromodiphenyl ether	mg/kg	IEC 62321-6:2015, GC-MS	N.D.	5	--
Nonabromodiphenyl ether	mg/kg	IEC 62321-6:2015, GC-MS	N.D.	5	--
--Decabromodiphenyl ether	mg/kg	IEC 62321-6:2015, GC-MS	N.D.	5	--
Dibutyl Phthalate(DBP)	mg/kg	IEC 62321-8 (111/321/CD), GC-MS	N.D.	50	1000
Benzylbutyl Phthalate(BBP)	mg/kg	IEC 62321-8 (111/321/CD), GC-MS	N.D.	50	1000
Di-(2-ethylhexyl) Phthalate(DEHP)	mg/kg	IEC 62321-8 (111/321/CD), GC-MS	N.D.	50	1000
Diisobutyl phthalate (DIBP)	mg/kg	IEC 62321-8 (111/321/CD), GC-MS	N.D.	50	1000

Test Result(No.9):

Test Item(s)	Unit	Test Method (Reference)	Result	MDL	Limit
Cadmium(Cd)	mg/kg	IEC 62321-5:2013, ICP-OES	N.D.	2	100
Lead(Pb)	mg/kg	IEC 62321-5:2013, ICP-OES	N.D.	2	1000
Mercury(Hg)	mg/kg	IEC 62321-4:2013, ICP-OES	N.D.	2	1000
Hexavalent Chromium(CrVI)	mg/kg	IEC 62321:2008, UV-Vis	N.D.	2	1000
Sum of PBBs	mg/kg	IEC 62321-6:2015, GC-MS	N.D.	--	1000
Monobromobiphenyl	mg/kg	IEC 62321-6:2015, GC-MS	N.D.	5	--
Dibromobiphenyl	mg/kg	IEC 62321-6:2015, GC-MS	N.D.	5	--
Tribromobiphenyl	mg/kg	IEC 62321-6:2015, GC-MS	N.D.	5	--
Tetrabromobiphenyl	mg/kg	IEC 62321-6:2015, GC-MS	N.D.	5	--
Pentabromobiphenyl	mg/kg	IEC 62321-6:2015, GC-MS	N.D.	5	--
Hexabromobiphenyl	mg/kg	IEC 62321-6:2015, GC-MS	N.D.	5	--

Heptabromobiphenyl	mg/kg	IEC 62321-6:2015, GC-MS	N.D.	5	--
Octabromobiphenyl	mg/kg	IEC 62321-6:2015, GC-MS	N.D.	5	--
Nonabromobiphenyl	mg/kg	IEC 62321-6:2015, GC-MS	N.D.	5	--
Decabromobiphenyl	mg/kg	IEC 62321-6:2015, GC-MS	N.D.	5	--
Sum of PBDEs	mg/kg	IEC 62321-6:2015, GC-MS	N.D.	5	1000
Monobromodiphenyl ether	mg/kg	IEC 62321-6:2015, GC-MS	N.D.	5	--
Dibromodiphenyl ether	mg/kg	IEC 62321-6:2015, GC-MS	N.D.	5	--
Tribromodiphenyl ether	mg/kg	IEC 62321-6:2015, GC-MS	N.D.	5	--
Tetrabromodiphenyl ether	mg/kg	IEC 62321-6:2015, GC-MS	N.D.	5	--
Pentabromodiphenyl ether	mg/kg	IEC 62321-6:2015, GC-MS	N.D.	5	--
Hexabromodiphenyl ether	mg/kg	IEC 62321-6:2015, GC-MS	N.D.	5	--
Heptabromodiphenyl ether	mg/kg	IEC 62321-6:2015, GC-MS	N.D.	5	--
Octabromodiphenyl ether	mg/kg	IEC 62321-6:2015, GC-MS	N.D.	5	--
Nonabromodiphenyl ether	mg/kg	IEC 62321-6:2015, GC-MS	N.D.	5	--
--Decabromodiphenyl ether	mg/kg	IEC 62321-6:2015, GC-MS	N.D.	5	--
Dibutyl Phthalate(DBP)	mg/kg	IEC 62321-8 (111/321/CD), GC-MS	N.D.	50	1000
Benzylbutyl Phthalate(BBP)	mg/kg	IEC 62321-8 (111/321/CD), GC-MS	N.D.	50	1000
Di-(2-ethylhexyl) Phthalate(DEHP)	mg/kg	IEC 62321-8 (111/321/CD), GC-MS	N.D.	50	1000
Diisobutyl phthalate (DIBP)	mg/kg	IEC 62321-8 (111/321/CD), GC-MS	N.D.	50	1000

Test Result(No.10):

Test Item(s)	Unit	Test Method (Reference)	Result	MDL	Limit
Cadmium(Cd)	mg/kg	IEC 62321-5:2013, ICP-OES	N.D.	2	100
Lead(Pb)	mg/kg	IEC 62321-5:2013, ICP-OES	N.D.	2	1000
Mercury(Hg)	mg/kg	IEC 62321-4:2013, ICP-OES	N.D.	2	1000
Hexavalent Chromium(CrVI)	mg/kg	IEC 62321:2008, UV-Vis	N.D.	2	1000
Sum of PBBs	mg/kg	IEC 62321-6:2015, GC-MS	N.A.	--	1000
Monobromobiphenyl	mg/kg	IEC 62321-6:2015, GC-MS	N.D.	5	--
Dibromobiphenyl	mg/kg	IEC 62321-6:2015, GC-MS	N.D.	5	--
Tribromobiphenyl	mg/kg	IEC 62321-6:2015, GC-MS	N.D.	5	--

Tetrabromobiphenyl	mg/kg	IEC 62321-6:2015, GC-MS	N.D.	5	--
Pentabromobiphenyl	mg/kg	IEC 62321-6:2015, GC-MS	N.D.	5	--
Hexabromobiphenyl	mg/kg	IEC 62321-6:2015, GC-MS	N.D.	5	--
Heptabromobiphenyl	mg/kg	IEC 62321-6:2015, GC-MS	N.D.	5	--
Octabromobiphenyl	mg/kg	IEC 62321-6:2015, GC-MS	N.D.	5	--
Nonabromobiphenyl	mg/kg	IEC 62321-6:2015, GC-MS	N.D.	5	--
Decabromobiphenyl	mg/kg	IEC 62321-6:2015, GC-MS	N.D.	5	--
Sum of PBDEs	mg/kg	IEC 62321-6:2015, GC-MS	N.A.	5	1000
Monobromodiphenyl ether	mg/kg	IEC 62321-6:2015, GC-MS	N.D.	5	--
Dibromodiphenyl ether	mg/kg	IEC 62321-6:2015, GC-MS	N.D.	5	--
Tribromodiphenyl ether	mg/kg	IEC 62321-6:2015, GC-MS	N.D.	5	--
Tetrabromodiphenyl ether	mg/kg	IEC 62321-6:2015, GC-MS	N.D.	5	--
Pentabromodiphenyl ether	mg/kg	IEC 62321-6:2015, GC-MS	N.D.	5	--
Hexabromodiphenyl ether	mg/kg	IEC 62321-6:2015, GC-MS	N.D.	5	--
Heptabromodiphenyl ether	mg/kg	IEC 62321-6:2015, GC-MS	N.D.	5	--
Octabromodiphenyl ether	mg/kg	IEC 62321-6:2015, GC-MS	N.D.	5	--
Nonabromodiphenyl ether	mg/kg	IEC 62321-6:2015, GC-MS	N.D.	5	--
--Decabromodiphenyl ether	mg/kg	IEC 62321-6:2015, GC-MS	N.D.	5	--
Dibutyl Phthalate(DBP)	mg/kg	IEC 62321-8 (111/321/CD), GC-MS	N.A.	50	1000
Benzylbutyl Phthalate(BBP)	mg/kg	IEC 62321-8 (111/321/CD), GC-MS	N.A.	50	1000
Di-(2-ethylhexyl) Phthalate(DEHP)	mg/kg	IEC 62321-8 (111/321/CD), GC-MS	N.A.	50	1000
Diisobutyl phthalate (DIBP)	mg/kg	IEC 62321-8 (111/321/CD), GC-MS	N.A.	50	1000

Test Result(No.11):

Test Item(s)	Unit	Test Method (Reference)	Result	MDL	Limit
Cadmium(Cd)	mg/kg	IEC 62321-5:2013, ICP-OES	N.D.	2	100
Lead(Pb)	mg/kg	IEC 62321-5:2013, ICP-OES	N.D.	2	1000
Mercury(Hg)	mg/kg	IEC 62321-4:2013, ICP-OES	N.D.	2	1000
Hexavalent Chromium(CrVI)	mg/kg	IEC 62321:2008, UV-Vis	N.D.	2	1000
Sum of PBBs	mg/kg	IEC 62321-6:2015, GC-MS	N.D.	--	1000

Monobromobiphenyl	mg/kg	IEC 62321-6:2015, GC-MS	N.D.	5	--
Dibromobiphenyl	mg/kg	IEC 62321-6:2015, GC-MS	N.D.	5	--
Tribromobiphenyl	mg/kg	IEC 62321-6:2015, GC-MS	N.D.	5	--
Tetrabromobiphenyl	mg/kg	IEC 62321-6:2015, GC-MS	N.D.	5	--
Pentabromobiphenyl	mg/kg	IEC 62321-6:2015, GC-MS	N.D.	5	--
Hexabromobiphenyl	mg/kg	IEC 62321-6:2015, GC-MS	N.D.	5	--
Heptabromobiphenyl	mg/kg	IEC 62321-6:2015, GC-MS	N.D.	5	--
Octabromobiphenyl	mg/kg	IEC 62321-6:2015, GC-MS	N.D.	5	--
Nonabromobiphenyl	mg/kg	IEC 62321-6:2015, GC-MS	N.D.	5	--
Decabromobiphenyl	mg/kg	IEC 62321-6:2015, GC-MS	N.D.	5	--
Sum of PBDEs	mg/kg	IEC 62321-6:2015, GC-MS	N.D.	5	1000
Monobromodiphenyl ether	mg/kg	IEC 62321-6:2015, GC-MS	N.D.	5	--
Dibromodiphenyl ether	mg/kg	IEC 62321-6:2015, GC-MS	N.D.	5	--
Tribromodiphenyl ether	mg/kg	IEC 62321-6:2015, GC-MS	N.D.	5	--
Tetrabromodiphenyl ether	mg/kg	IEC 62321-6:2015, GC-MS	N.D.	5	--
Pentabromodiphenyl ether	mg/kg	IEC 62321-6:2015, GC-MS	N.D.	5	--
Hexabromodiphenyl ether	mg/kg	IEC 62321-6:2015, GC-MS	N.D.	5	--
Heptabromodiphenyl ether	mg/kg	IEC 62321-6:2015, GC-MS	N.D.	5	--
Octabromodiphenyl ether	mg/kg	IEC 62321-6:2015, GC-MS	N.D.	5	--
Nonabromodiphenyl ether	mg/kg	IEC 62321-6:2015, GC-MS	N.D.	5	--
--Decabromodiphenyl ether	mg/kg	IEC 62321-6:2015, GC-MS	N.D.	5	--
Dibutyl Phthalate(DBP)	mg/kg	IEC 62321-8 (111/321/CD), GC-MS	N.D.	50	1000
Benzylbutyl Phthalate(BBP)	mg/kg	IEC 62321-8 (111/321/CD), GC-MS	N.D.	50	1000
Di-(2-ethylhexyl) Phthalate(DEHP)	mg/kg	IEC 62321-8 (111/321/CD), GC-MS	N.D.	50	1000
Diisobutyl phthalate (DIBP)	mg/kg	IEC 62321-8 (111/321/CD), GC-MS	N.D.	50	1000

Test Result(No.12):

Test Item(s)	Unit	Test Method (Reference)	Result	MDL	Limit
Cadmium(Cd)	mg/kg	IEC 62321-5:2013, ICP-OES	N.D.	2	100
Lead(Pb)	mg/kg	IEC 62321-5:2013, ICP-OES	N.D.	2	1000

Mercury(Hg)	mg/kg	IEC 62321-4:2013, ICP-OES	N.D.	2	1000
Hexavalent Chromium(CrVI)	mg/kg	IEC 62321:2008, UV-Vis	N.D.	2	1000
Sum of PBBs	mg/kg	IEC 62321-6:2015, GC-MS	N.D.	--	1000
Monobromobiphenyl	mg/kg	IEC 62321-6:2015, GC-MS	N.D.	5	--
Dibromobiphenyl	mg/kg	IEC 62321-6:2015, GC-MS	N.D.	5	--
Tribromobiphenyl	mg/kg	IEC 62321-6:2015, GC-MS	N.D.	5	--
Tetrabromobiphenyl	mg/kg	IEC 62321-6:2015, GC-MS	N.D.	5	--
Pentabromobiphenyl	mg/kg	IEC 62321-6:2015, GC-MS	N.D.	5	--
Hexabromobiphenyl	mg/kg	IEC 62321-6:2015, GC-MS	N.D.	5	--
Heptabromobiphenyl	mg/kg	IEC 62321-6:2015, GC-MS	N.D.	5	--
Octabromobiphenyl	mg/kg	IEC 62321-6:2015, GC-MS	N.D.	5	--
Nonabromobiphenyl	mg/kg	IEC 62321-6:2015, GC-MS	N.D.	5	--
Decabromobiphenyl	mg/kg	IEC 62321-6:2015, GC-MS	N.D.	5	--
Sum of PBDEs	mg/kg	IEC 62321-6:2015, GC-MS	N.D.	5	1000
Monobromodiphenyl ether	mg/kg	IEC 62321-6:2015, GC-MS	N.D.	5	--
Dibromodiphenyl ether	mg/kg	IEC 62321-6:2015, GC-MS	N.D.	5	--
Tribromodiphenyl ether	mg/kg	IEC 62321-6:2015, GC-MS	N.D.	5	--
Tetrabromodiphenyl ether	mg/kg	IEC 62321-6:2015, GC-MS	N.D.	5	--
Pentabromodiphenyl ether	mg/kg	IEC 62321-6:2015, GC-MS	N.D.	5	--
Hexabromodiphenyl ether	mg/kg	IEC 62321-6:2015, GC-MS	N.D.	5	--
Heptabromodiphenyl ether	mg/kg	IEC 62321-6:2015, GC-MS	N.D.	5	--
Octabromodiphenyl ether	mg/kg	IEC 62321-6:2015, GC-MS	N.D.	5	--
Nonabromodiphenyl ether	mg/kg	IEC 62321-6:2015, GC-MS	N.D.	5	--
--Decabromodiphenyl ether	mg/kg	IEC 62321-6:2015, GC-MS	N.D.	5	--
Dibutyl Phthalate(DBP)	mg/kg	IEC 62321-8 (111/321/CD), GC-MS	N.D.	50	1000
Benzylbutyl Phthalate(BBP)	mg/kg	IEC 62321-8 (111/321/CD), GC-MS	N.D.	50	1000
Di-(2-ethylhexyl) Phthalate(DEHP)	mg/kg	IEC 62321-8 (111/321/CD), GC-MS	N.D.	50	1000
Diisobutyl phthalate (DIBP)	mg/kg	IEC 62321-8 (111/321/CD), GC-MS	N.D.	50	1000

Test Result(No.13):

Test Item(s)	Unit	Test Method	Result	MDL	Limit
--------------	------	-------------	--------	-----	-------

		(Reference)			
Cadmium(Cd)	mg/kg	IEC 62321-5:2013, ICP-OES	N.D.	2	100
Lead(Pb)	mg/kg	IEC 62321-5:2013, ICP-OES	N.D.	2	1000
Mercury(Hg)	mg/kg	IEC 62321-4:2013, ICP-OES	N.D.	2	1000
Hexavalent Chromium(CrVI)	mg/kg	IEC 62321:2008, UV-Vis	N.D.	2	1000
Sum of PBBs	mg/kg	IEC 62321-6:2015, GC-MS	N.D.	--	1000
Monobromobiphenyl	mg/kg	IEC 62321-6:2015, GC-MS	N.D.	5	--
Dibromobiphenyl	mg/kg	IEC 62321-6:2015, GC-MS	N.D.	5	--
Tribromobiphenyl	mg/kg	IEC 62321-6:2015, GC-MS	N.D.	5	--
Tetrabromobiphenyl	mg/kg	IEC 62321-6:2015, GC-MS	N.D.	5	--
Pentabromobiphenyl	mg/kg	IEC 62321-6:2015, GC-MS	N.D.	5	--
Hexabromobiphenyl	mg/kg	IEC 62321-6:2015, GC-MS	N.D.	5	--
Heptabromobiphenyl	mg/kg	IEC 62321-6:2015, GC-MS	N.D.	5	--
Octabromobiphenyl	mg/kg	IEC 62321-6:2015, GC-MS	N.D.	5	--
Nonabromobiphenyl	mg/kg	IEC 62321-6:2015, GC-MS	N.D.	5	--
Decabromobiphenyl	mg/kg	IEC 62321-6:2015, GC-MS	N.D.	5	--
Sum of PBDEs	mg/kg	IEC 62321-6:2015, GC-MS	N.D.	5	1000
Monobromodiphenyl ether	mg/kg	IEC 62321-6:2015, GC-MS	N.D.	5	--
Dibromodiphenyl ether	mg/kg	IEC 62321-6:2015, GC-MS	N.D.	5	--
Tribromodiphenyl ether	mg/kg	IEC 62321-6:2015, GC-MS	N.D.	5	--
Tetrabromodiphenyl ether	mg/kg	IEC 62321-6:2015, GC-MS	N.D.	5	--
Pentabromodiphenyl ether	mg/kg	IEC 62321-6:2015, GC-MS	N.D.	5	--
Hexabromodiphenyl ether	mg/kg	IEC 62321-6:2015, GC-MS	N.D.	5	--
Heptabromodiphenyl ether	mg/kg	IEC 62321-6:2015, GC-MS	N.D.	5	--
Octabromodiphenyl ether	mg/kg	IEC 62321-6:2015, GC-MS	N.D.	5	--
Nonabromodiphenyl ether	mg/kg	IEC 62321-6:2015, GC-MS	N.D.	5	--
--Decabromodiphenyl ether	mg/kg	IEC 62321-6:2015, GC-MS	N.D.	5	--
Dibutyl Phthalate(DBP)	mg/kg	IEC 62321-8 (111/321/CD), GC-MS	N.D.	50	1000
Benzylbutyl Phthalate(BBP)	mg/kg	IEC 62321-8 (111/321/CD), GC-MS	N.D.	50	1000
Di-(2-ethylhexyl) Phthalate(DEHP)	mg/kg	IEC 62321-8 (111/321/CD), GC-MS	N.D.	50	1000
Diisobutyl phthalate (DIBP)	mg/kg	IEC 62321-8 (111/321/CD), GC-MS	N.D.	50	1000

Test Result(No.14):

Test Item(s)	Unit	Test Method (Reference)	Result	MDL	Limit
Cadmium(Cd)	mg/kg	IEC 62321-5:2013, ICP-OES	N.D.	2	100
Lead(Pb)	mg/kg	IEC 62321-5:2013, ICP-OES	N.D.	2	1000
Mercury(Hg)	mg/kg	IEC 62321-4:2013, ICP-OES	N.D.	2	1000
Hexavalent Chromium(CrVI)	mg/kg	IEC 62321:2008, UV-Vis	N.D.	2	1000
Sum of PBBs	mg/kg	IEC 62321-6:2015, GC-MS	N.D.	--	1000
Monobromobiphenyl	mg/kg	IEC 62321-6:2015, GC-MS	N.D.	5	--
Dibromobiphenyl	mg/kg	IEC 62321-6:2015, GC-MS	N.D.	5	--
Tribromobiphenyl	mg/kg	IEC 62321-6:2015, GC-MS	N.D.	5	--
Tetrabromobiphenyl	mg/kg	IEC 62321-6:2015, GC-MS	N.D.	5	--
Pentabromobiphenyl	mg/kg	IEC 62321-6:2015, GC-MS	N.D.	5	--
Hexabromobiphenyl	mg/kg	IEC 62321-6:2015, GC-MS	N.D.	5	--
Heptabromobiphenyl	mg/kg	IEC 62321-6:2015, GC-MS	N.D.	5	--
Octabromobiphenyl	mg/kg	IEC 62321-6:2015, GC-MS	N.D.	5	--
Nonabromobiphenyl	mg/kg	IEC 62321-6:2015, GC-MS	N.D.	5	--
Decabromobiphenyl	mg/kg	IEC 62321-6:2015, GC-MS	N.D.	5	--
Sum of PBDEs	mg/kg	IEC 62321-6:2015, GC-MS	N.D.	5	1000
Monobromodiphenyl ether	mg/kg	IEC 62321-6:2015, GC-MS	N.D.	5	--
Dibromodiphenyl ether	mg/kg	IEC 62321-6:2015, GC-MS	N.D.	5	--
Tribromodiphenyl ether	mg/kg	IEC 62321-6:2015, GC-MS	N.D.	5	--
Tetrabromodiphenyl ether	mg/kg	IEC 62321-6:2015, GC-MS	N.D.	5	--
Pentabromodiphenyl ether	mg/kg	IEC 62321-6:2015, GC-MS	N.D.	5	--
Hexabromodiphenyl ether	mg/kg	IEC 62321-6:2015, GC-MS	N.D.	5	--
Heptabromodiphenyl ether	mg/kg	IEC 62321-6:2015, GC-MS	N.D.	5	--
Octabromodiphenyl ether	mg/kg	IEC 62321-6:2015, GC-MS	N.D.	5	--
Nonabromodiphenyl ether	mg/kg	IEC 62321-6:2015, GC-MS	N.D.	5	--
--Decabromodiphenyl ether	mg/kg	IEC 62321-6:2015, GC-MS	N.D.	5	--
Dibutyl Phthalate(DBP)	mg/kg	IEC 62321-8 (111/321/CD), GC-MS	N.D.	50	1000
Benzylbutyl Phthalate(BBP)	mg/kg	IEC 62321-8 (111/321/CD), GC-MS	N.D.	50	1000
Di-(2-ethylhexyl)	mg/kg	IEC 62321-8 (111/321/CD),	N.D.	50	1000

Phthalate(DEHP)		GC-MS			
Diisobutyl phthalate (DIBP)	mg/kg	IEC 62321-8 (111/321/CD), GC-MS	N.D.	50	1000

Test Result(No.15):

Test Item(s)	Unit	Test Method (Reference)	Result	MDL	Limit
Cadmium(Cd)	mg/kg	IEC 62321-5:2013, ICP-OES	N.D.	2	100
Lead(Pb)	mg/kg	IEC 62321-5:2013, ICP-OES	N.D.	2	1000
Mercury(Hg)	mg/kg	IEC 62321-4:2013, ICP-OES	N.D.	2	1000
Hexavalent Chromium(CrVI)	mg/kg	IEC 62321:2008, UV-Vis	N.D.	2	1000
Sum of PBBs	mg/kg	IEC 62321-6:2015, GC-MS	N.D.	--	1000
Monobromobiphenyl	mg/kg	IEC 62321-6:2015, GC-MS	N.D.	5	--
Dibromobiphenyl	mg/kg	IEC 62321-6:2015, GC-MS	N.D.	5	--
Tribromobiphenyl	mg/kg	IEC 62321-6:2015, GC-MS	N.D.	5	--
Tetrabromobiphenyl	mg/kg	IEC 62321-6:2015, GC-MS	N.D.	5	--
Pentabromobiphenyl	mg/kg	IEC 62321-6:2015, GC-MS	N.D.	5	--
Hexabromobiphenyl	mg/kg	IEC 62321-6:2015, GC-MS	N.D.	5	--
Heptabromobiphenyl	mg/kg	IEC 62321-6:2015, GC-MS	N.D.	5	--
Octabromobiphenyl	mg/kg	IEC 62321-6:2015, GC-MS	N.D.	5	--
Nonabromobiphenyl	mg/kg	IEC 62321-6:2015, GC-MS	N.D.	5	--
Decabromobiphenyl	mg/kg	IEC 62321-6:2015, GC-MS	N.D.	5	--
Sum of PBDEs	mg/kg	IEC 62321-6:2015, GC-MS	N.D.	5	1000
Monobromodiphenyl ether	mg/kg	IEC 62321-6:2015, GC-MS	N.D.	5	--
Dibromodiphenyl ether	mg/kg	IEC 62321-6:2015, GC-MS	N.D.	5	--
Tribromodiphenyl ether	mg/kg	IEC 62321-6:2015, GC-MS	N.D.	5	--
Tetrabromodiphenyl ether	mg/kg	IEC 62321-6:2015, GC-MS	N.D.	5	--
Pentabromodiphenyl ether	mg/kg	IEC 62321-6:2015, GC-MS	N.D.	5	--
Hexabromodiphenyl ether	mg/kg	IEC 62321-6:2015, GC-MS	N.D.	5	--
Heptabromodiphenyl ether	mg/kg	IEC 62321-6:2015, GC-MS	N.D.	5	--
Octabromodiphenyl ether	mg/kg	IEC 62321-6:2015, GC-MS	N.D.	5	--
Nonabromodiphenyl ether	mg/kg	IEC 62321-6:2015, GC-MS	N.D.	5	--
--Decabromodiphenyl ether	mg/kg	IEC 62321-6:2015, GC-MS	N.D.	5	--

Dibutyl Phthalate(DBP)	mg/kg	IEC 62321-8 (111/321/CD), GC-MS	N.D.	50	1000
Benzylbutyl Phthalate(BBP)	mg/kg	IEC 62321-8 (111/321/CD), GC-MS	N.D.	50	1000
Di-(2-ethylhexyl) Phthalate(DEHP)	mg/kg	IEC 62321-8 (111/321/CD), GC-MS	N.D.	50	1000
Diisobutyl phthalate (DIBP)	mg/kg	IEC 62321-8 (111/321/CD), GC-MS	N.D.	50	1000

Test Result(No.16):

Test Item(s)	Unit	Test Method (Reference)	Result	MDL	Limit
Cadmium(Cd)	mg/kg	IEC 62321-5:2013, ICP-OES	N.D.	2	100
Lead(Pb)	mg/kg	IEC 62321-5:2013, ICP-OES	N.D.	2	1000
Mercury(Hg)	mg/kg	IEC 62321-4:2013, ICP-OES	N.D.	2	1000
Hexavalent Chromium(CrVI)	mg/kg	IEC 62321:2008, UV-Vis	N.D.	2	1000
Sum of PBBs	mg/kg	IEC 62321-6:2015, GC-MS	N.D.	--	1000
Monobromobiphenyl	mg/kg	IEC 62321-6:2015, GC-MS	N.D.	5	--
Dibromobiphenyl	mg/kg	IEC 62321-6:2015, GC-MS	N.D.	5	--
Tribromobiphenyl	mg/kg	IEC 62321-6:2015, GC-MS	N.D.	5	--
Tetrabromobiphenyl	mg/kg	IEC 62321-6:2015, GC-MS	N.D.	5	--
Pentabromobiphenyl	mg/kg	IEC 62321-6:2015, GC-MS	N.D.	5	--
Hexabromobiphenyl	mg/kg	IEC 62321-6:2015, GC-MS	N.D.	5	--
Heptabromobiphenyl	mg/kg	IEC 62321-6:2015, GC-MS	N.D.	5	--
Octabromobiphenyl	mg/kg	IEC 62321-6:2015, GC-MS	N.D.	5	--
Nonabromobiphenyl	mg/kg	IEC 62321-6:2015, GC-MS	N.D.	5	--
Decabromobiphenyl	mg/kg	IEC 62321-6:2015, GC-MS	N.D.	5	--
Sum of PBDEs	mg/kg	IEC 62321-6:2015, GC-MS	N.D.	5	1000
Monobromodiphenyl ether	mg/kg	IEC 62321-6:2015, GC-MS	N.D.	5	--
Dibromodiphenyl ether	mg/kg	IEC 62321-6:2015, GC-MS	N.D.	5	--
Tribromodiphenyl ether	mg/kg	IEC 62321-6:2015, GC-MS	N.D.	5	--
Tetrabromodiphenyl ether	mg/kg	IEC 62321-6:2015, GC-MS	N.D.	5	--
Pentabromodiphenyl ether	mg/kg	IEC 62321-6:2015, GC-MS	N.D.	5	--
Hexabromodiphenyl ether	mg/kg	IEC 62321-6:2015, GC-MS	N.D.	5	--
Heptabromodiphenyl ether	mg/kg	IEC 62321-6:2015, GC-MS	N.D.	5	--
Octabromodiphenyl ether	mg/kg	IEC 62321-6:2015, GC-MS	N.D.	5	--

Nonabromodiphenyl ether	mg/kg	IEC 62321-6:2015, GC-MS	N.D.	5	--
--Decabromodiphenyl ether	mg/kg	IEC 62321-6:2015, GC-MS	N.D.	5	--
Dibutyl Phthalate(DBP)	mg/kg	IEC 62321-8 (111/321/CD), GC-MS	N.D.	50	1000
Benzylbutyl Phthalate(BBP)	mg/kg	IEC 62321-8 (111/321/CD), GC-MS	N.D.	50	1000
Di-(2-ethylhexyl) Phthalate(DEHP)	mg/kg	IEC 62321-8 (111/321/CD), GC-MS	N.D.	50	1000
Diisobutyl phthalate (DIBP)	mg/kg	IEC 62321-8 (111/321/CD), GC-MS	N.D.	50	1000

Test Result(No.17):

Test Item(s)	Unit	Test Method (Reference)	Result	MDL	Limit
Cadmium(Cd)	mg/kg	IEC 62321-5:2013, ICP-OES	N.D.	2	100
Lead(Pb)	mg/kg	IEC 62321-5:2013, ICP-OES	N.D.	2	1000
Mercury(Hg)	mg/kg	IEC 62321-4:2013, ICP-OES	N.D.	2	1000
Hexavalent Chromium(CrVI)	mg/kg	IEC 62321:2008, UV-Vis	N.D.	2	1000
Sum of PBBs	mg/kg	IEC 62321-6:2015, GC-MS	N.D.	--	1000
Monobromobiphenyl	mg/kg	IEC 62321-6:2015, GC-MS	N.D.	5	--
Dibromobiphenyl	mg/kg	IEC 62321-6:2015, GC-MS	N.D.	5	--
Tribromobiphenyl	mg/kg	IEC 62321-6:2015, GC-MS	N.D.	5	--
Tetrabromobiphenyl	mg/kg	IEC 62321-6:2015, GC-MS	N.D.	5	--
Pentabromobiphenyl	mg/kg	IEC 62321-6:2015, GC-MS	N.D.	5	--
Hexabromobiphenyl	mg/kg	IEC 62321-6:2015, GC-MS	N.D.	5	--
Heptabromobiphenyl	mg/kg	IEC 62321-6:2015, GC-MS	N.D.	5	--
Octabromobiphenyl	mg/kg	IEC 62321-6:2015, GC-MS	N.D.	5	--
Nonabromobiphenyl	mg/kg	IEC 62321-6:2015, GC-MS	N.D.	5	--
Decabromobiphenyl	mg/kg	IEC 62321-6:2015, GC-MS	N.D.	5	--
Sum of PBDEs	mg/kg	IEC 62321-6:2015, GC-MS	N.D.	5	1000
Monobromodiphenyl ether	mg/kg	IEC 62321-6:2015, GC-MS	N.D.	5	--
Dibromodiphenyl ether	mg/kg	IEC 62321-6:2015, GC-MS	N.D.	5	--
Tribromodiphenyl ether	mg/kg	IEC 62321-6:2015, GC-MS	N.D.	5	--
Tetrabromodiphenyl ether	mg/kg	IEC 62321-6:2015, GC-MS	N.D.	5	--
Pentabromodiphenyl ether	mg/kg	IEC 62321-6:2015, GC-MS	N.D.	5	--
Hexabromodiphenyl ether	mg/kg	IEC 62321-6:2015, GC-MS	N.D.	5	--

Heptabromodiphenyl ether	mg/kg	IEC 62321-6:2015, GC-MS	N.D.	5	--
Octabromodiphenyl ether	mg/kg	IEC 62321-6:2015, GC-MS	N.D.	5	--
Nonabromodiphenyl ether	mg/kg	IEC 62321-6:2015, GC-MS	N.D.	5	--
--Decabromodiphenyl ether	mg/kg	IEC 62321-6:2015, GC-MS	N.D.	5	--
Dibutyl Phthalate(DBP)	mg/kg	IEC 62321-8 (111/321/CD), GC-MS	N.D.	50	1000
Benzylbutyl Phthalate(BBP)	mg/kg	IEC 62321-8 (111/321/CD), GC-MS	N.D.	50	1000
Di-(2-ethylhexyl) Phthalate(DEHP)	mg/kg	IEC 62321-8 (111/321/CD), GC-MS	N.D.	50	1000
Diisobutyl phthalate (DIBP)	mg/kg	IEC 62321-8 (111/321/CD), GC-MS	N.D.	50	1000

Test Result(No.18):

Test Item(s)	Unit	Test Method (Reference)	Result	MDL	Limit
Cadmium(Cd)	mg/kg	IEC 62321-5:2013, ICP-OES	N.D.	2	100
Lead(Pb)	mg/kg	IEC 62321-5:2013, ICP-OES	N.D.	2	1000
Mercury(Hg)	mg/kg	IEC 62321-4:2013, ICP-OES	N.D.	2	1000
Hexavalent Chromium(CrVI)	mg/kg	IEC 62321:2008, UV-Vis	N.D.	2	1000
Sum of PBBs	mg/kg	IEC 62321-6:2015, GC-MS	N.D.	--	1000
Monobromobiphenyl	mg/kg	IEC 62321-6:2015, GC-MS	N.D.	5	--
Dibromobiphenyl	mg/kg	IEC 62321-6:2015, GC-MS	N.D.	5	--
Tribromobiphenyl	mg/kg	IEC 62321-6:2015, GC-MS	N.D.	5	--
Tetrabromobiphenyl	mg/kg	IEC 62321-6:2015, GC-MS	N.D.	5	--
Pentabromobiphenyl	mg/kg	IEC 62321-6:2015, GC-MS	N.D.	5	--
Hexabromobiphenyl	mg/kg	IEC 62321-6:2015, GC-MS	N.D.	5	--
Heptabromobiphenyl	mg/kg	IEC 62321-6:2015, GC-MS	N.D.	5	--
Octabromobiphenyl	mg/kg	IEC 62321-6:2015, GC-MS	N.D.	5	--
Nonabromobiphenyl	mg/kg	IEC 62321-6:2015, GC-MS	N.D.	5	--
Decabromobiphenyl	mg/kg	IEC 62321-6:2015, GC-MS	N.D.	5	--
Sum of PBDEs	mg/kg	IEC 62321-6:2015, GC-MS	N.D.	5	1000
Monobromodiphenyl ether	mg/kg	IEC 62321-6:2015, GC-MS	N.D.	5	--
Dibromodiphenyl ether	mg/kg	IEC 62321-6:2015, GC-MS	N.D.	5	--
Tribromodiphenyl ether	mg/kg	IEC 62321-6:2015, GC-MS	N.D.	5	--
Tetrabromodiphenyl ether	mg/kg	IEC 62321-6:2015, GC-MS	N.D.	5	--

Pentabromodiphenyl ether	mg/kg	IEC 62321-6:2015, GC-MS	N.D.	5	--
Hexabromodiphenyl ether	mg/kg	IEC 62321-6:2015, GC-MS	N.D.	5	--
Heptabromodiphenyl ether	mg/kg	IEC 62321-6:2015, GC-MS	N.D.	5	--
Octabromodiphenyl ether	mg/kg	IEC 62321-6:2015, GC-MS	N.D.	5	--
Nonabromodiphenyl ether	mg/kg	IEC 62321-6:2015, GC-MS	N.D.	5	--
--Decabromodiphenyl ether	mg/kg	IEC 62321-6:2015, GC-MS	N.D.	5	--
Dibutyl Phthalate(DBP)	mg/kg	IEC 62321-8 (111/321/CD), GC-MS	N.D.	50	1000
Benzylbutyl Phthalate(BBP)	mg/kg	IEC 62321-8 (111/321/CD), GC-MS	N.D.	50	1000
Di-(2-ethylhexyl) Phthalate(DEHP)	mg/kg	IEC 62321-8 (111/321/CD), GC-MS	N.D.	50	1000
Diisobutyl phthalate (DIBP)	mg/kg	IEC 62321-8 (111/321/CD), GC-MS	N.D.	50	1000

Test Result(No.19):

Test Item(s)	Unit	Test Method (Reference)	Result	MDL	Limit
Cadmium(Cd)	mg/kg	IEC 62321-5:2013, ICP-OES	N.D.	2	100
Lead(Pb)	mg/kg	IEC 62321-5:2013, ICP-OES	N.D.	2	1000
Mercury(Hg)	mg/kg	IEC 62321-4:2013, ICP-OES	N.D.	2	1000
Hexavalent Chromium(CrVI)	mg/kg	IEC 62321:2008, UV-Vis	N.D.	2	1000
Sum of PBBs	mg/kg	IEC 62321-6:2015, GC-MS	N.D.	--	1000
Monobromobiphenyl	mg/kg	IEC 62321-6:2015, GC-MS	N.D.	5	--
Dibromobiphenyl	mg/kg	IEC 62321-6:2015, GC-MS	N.D.	5	--
Tribromobiphenyl	mg/kg	IEC 62321-6:2015, GC-MS	N.D.	5	--
Tetrabromobiphenyl	mg/kg	IEC 62321-6:2015, GC-MS	N.D.	5	--
Pentabromobiphenyl	mg/kg	IEC 62321-6:2015, GC-MS	N.D.	5	--
Hexabromobiphenyl	mg/kg	IEC 62321-6:2015, GC-MS	N.D.	5	--
Heptabromobiphenyl	mg/kg	IEC 62321-6:2015, GC-MS	N.D.	5	--
Octabromobiphenyl	mg/kg	IEC 62321-6:2015, GC-MS	N.D.	5	--
Nonabromobiphenyl	mg/kg	IEC 62321-6:2015, GC-MS	N.D.	5	--
Decabromobiphenyl	mg/kg	IEC 62321-6:2015, GC-MS	N.D.	5	--
Sum of PBDEs	mg/kg	IEC 62321-6:2015, GC-MS	N.D.	5	1000
Monobromodiphenyl ether	mg/kg	IEC 62321-6:2015, GC-MS	N.D.	5	--
Dibromodiphenyl ether	mg/kg	IEC 62321-6:2015, GC-MS	N.D.	5	--

Tribromodiphenyl ether	mg/kg	IEC 62321-6:2015, GC-MS	N.D.	5	--
Tetrabromodiphenyl ether	mg/kg	IEC 62321-6:2015, GC-MS	N.D.	5	--
Pentabromodiphenyl ether	mg/kg	IEC 62321-6:2015, GC-MS	N.D.	5	--
Hexabromodiphenyl ether	mg/kg	IEC 62321-6:2015, GC-MS	N.D.	5	--
Heptabromodiphenyl ether	mg/kg	IEC 62321-6:2015, GC-MS	N.D.	5	--
Octabromodiphenyl ether	mg/kg	IEC 62321-6:2015, GC-MS	N.D.	5	--
Nonabromodiphenyl ether	mg/kg	IEC 62321-6:2015, GC-MS	N.D.	5	--
--Decabromodiphenyl ether	mg/kg	IEC 62321-6:2015, GC-MS	N.D.	5	--
Dibutyl Phthalate(DBP)	mg/kg	IEC 62321-8 (111/321/CD), GC-MS	N.D.	50	1000
Benzylbutyl Phthalate(BBP)	mg/kg	IEC 62321-8 (111/321/CD), GC-MS	N.D.	50	1000
Di-(2-ethylhexyl) Phthalate(DEHP)	mg/kg	IEC 62321-8 (111/321/CD), GC-MS	N.D.	50	1000
Diisobutyl phthalate (DIBP)	mg/kg	IEC 62321-8 (111/321/CD), GC-MS	N.D.	50	1000

Test Result(No.20):

Test Item(s)	Unit	Test Method (Reference)	Result	MDL	Limit
Cadmium(Cd)	mg/kg	IEC 62321-5:2013, ICP-OES	N.D.	2	100
Lead(Pb)	mg/kg	IEC 62321-5:2013, ICP-OES	N.D.	2	1000
Mercury(Hg)	mg/kg	IEC 62321-4:2013, ICP-OES	N.D.	2	1000
Hexavalent Chromium(CrVI)	mg/kg	IEC 62321:2008, UV-Vis	N.D.	2	1000
Sum of PBBs	mg/kg	IEC 62321-6:2015, GC-MS	NA.	--	1000
Monobromobiphenyl	mg/kg	IEC 62321-6:2015, GC-MS	N.D.	5	--
Dibromobiphenyl	mg/kg	IEC 62321-6:2015, GC-MS	N.D.	5	--
Tribromobiphenyl	mg/kg	IEC 62321-6:2015, GC-MS	N.D.	5	--
Tetrabromobiphenyl	mg/kg	IEC 62321-6:2015, GC-MS	N.D.	5	--
Pentabromobiphenyl	mg/kg	IEC 62321-6:2015, GC-MS	N.D.	5	--
Hexabromobiphenyl	mg/kg	IEC 62321-6:2015, GC-MS	N.D.	5	--
Heptabromobiphenyl	mg/kg	IEC 62321-6:2015, GC-MS	N.D.	5	--
Octabromobiphenyl	mg/kg	IEC 62321-6:2015, GC-MS	N.D.	5	--
Nonabromobiphenyl	mg/kg	IEC 62321-6:2015, GC-MS	N.D.	5	--
Decabromobiphenyl	mg/kg	IEC 62321-6:2015, GC-MS	N.D.	5	--
Sum of PBDEs	mg/kg	IEC 62321-6:2015, GC-MS	NA.	5	1000

Monobromodiphenyl ether	mg/kg	IEC 62321-6:2015, GC-MS	N.D.	5	--
Dibromodiphenyl ether	mg/kg	IEC 62321-6:2015, GC-MS	N.D.	5	--
Tribromodiphenyl ether	mg/kg	IEC 62321-6:2015, GC-MS	N.D.	5	--
Tetrabromodiphenyl ether	mg/kg	IEC 62321-6:2015, GC-MS	N.D.	5	--
Pentabromodiphenyl ether	mg/kg	IEC 62321-6:2015, GC-MS	N.D.	5	--
Hexabromodiphenyl ether	mg/kg	IEC 62321-6:2015, GC-MS	N.D.	5	--
Heptabromodiphenyl ether	mg/kg	IEC 62321-6:2015, GC-MS	N.D.	5	--
Octabromodiphenyl ether	mg/kg	IEC 62321-6:2015, GC-MS	N.D.	5	--
Nonabromodiphenyl ether	mg/kg	IEC 62321-6:2015, GC-MS	N.D.	5	--
--Decabromodiphenyl ether	mg/kg	IEC 62321-6:2015, GC-MS	N.D.	5	--
Dibutyl Phthalate(DBP)	mg/kg	IEC 62321-8 (111/321/CD), GC-MS	NA.	50	1000
Benzylbutyl Phthalate(BBP)	mg/kg	IEC 62321-8 (111/321/CD), GC-MS	NA.	50	1000
Di-(2-ethylhexyl) Phthalate(DEHP)	mg/kg	IEC 62321-8 (111/321/CD), GC-MS	NA.	50	1000
Diisobutyl phthalate (DIBP)	mg/kg	IEC 62321-8 (111/321/CD), GC-MS	NA.	50	1000

Test Result(No.21):

Test Item(s)	Unit	Test Method (Reference)	Result	MDL	Limit
Cadmium(Cd)	mg/kg	IEC 62321-5:2013, ICP-OES	N.D.	2	100
Lead(Pb)	mg/kg	IEC 62321-5:2013, ICP-OES	N.D.	2	1000
Mercury(Hg)	mg/kg	IEC 62321-4:2013, ICP-OES	N.D.	2	1000
Hexavalent Chromium(CrVI)	mg/kg	IEC 62321:2008, UV-Vis	N.D.	2	1000
Sum of PBBs	mg/kg	IEC 62321-6:2015, GC-MS	N.D.	--	1000
Monobromobiphenyl	mg/kg	IEC 62321-6:2015, GC-MS	N.D.	5	--
Dibromobiphenyl	mg/kg	IEC 62321-6:2015, GC-MS	N.D.	5	--
Tribromobiphenyl	mg/kg	IEC 62321-6:2015, GC-MS	N.D.	5	--
Tetrabromobiphenyl	mg/kg	IEC 62321-6:2015, GC-MS	N.D.	5	--
Pentabromobiphenyl	mg/kg	IEC 62321-6:2015, GC-MS	N.D.	5	--
Hexabromobiphenyl	mg/kg	IEC 62321-6:2015, GC-MS	N.D.	5	--
Heptabromobiphenyl	mg/kg	IEC 62321-6:2015, GC-MS	N.D.	5	--
Octabromobiphenyl	mg/kg	IEC 62321-6:2015, GC-MS	N.D.	5	--

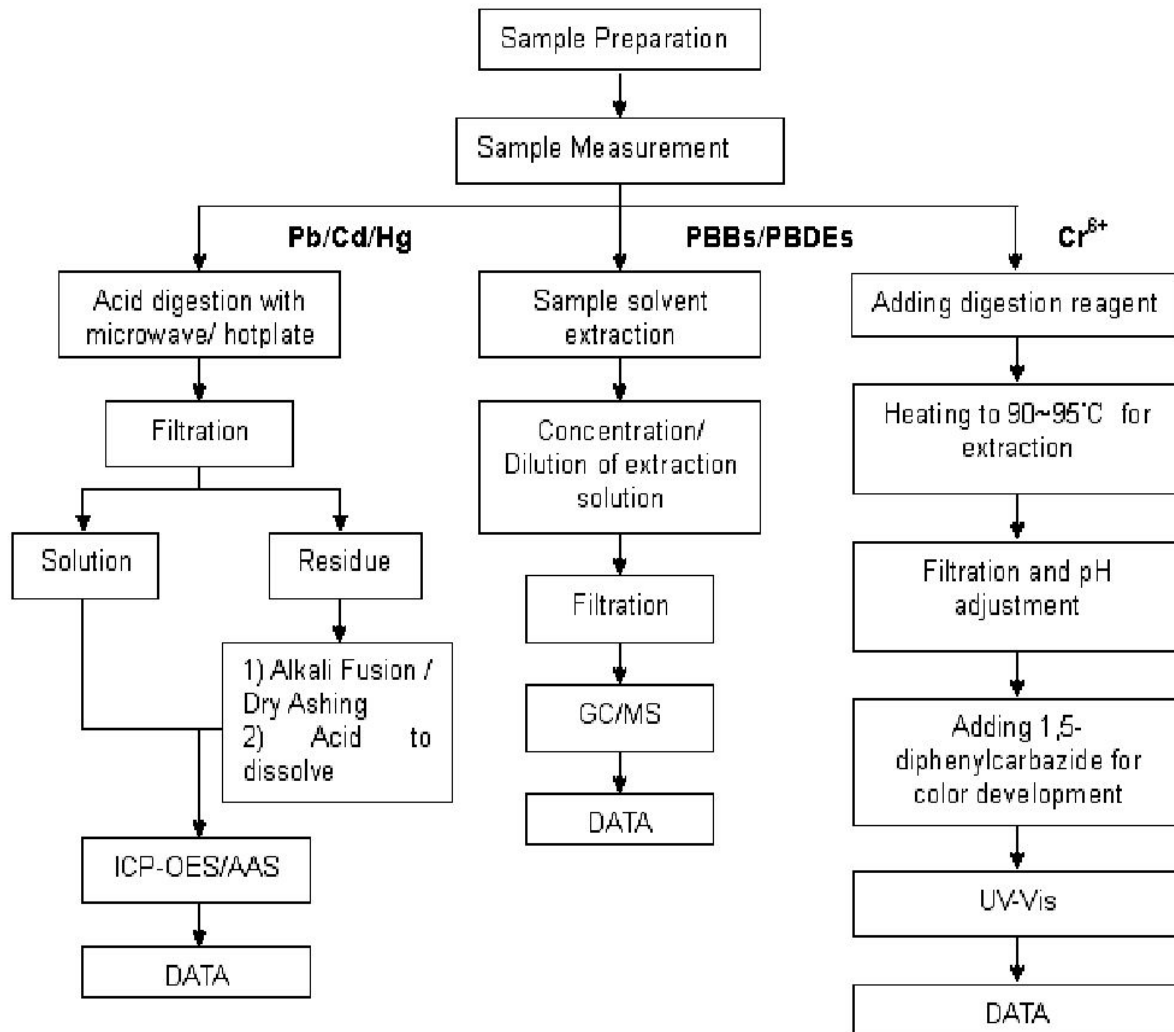
Nonabromobiphenyl	mg/kg	IEC 62321-6:2015, GC-MS	N.D.	5	--
Decabromobiphenyl	mg/kg	IEC 62321-6:2015, GC-MS	N.D.	5	--
Sum of PBDEs	mg/kg	IEC 62321-6:2015, GC-MS	N.D.	5	1000
Monobromodiphenyl ether	mg/kg	IEC 62321-6:2015, GC-MS	N.D.	5	--
Dibromodiphenyl ether	mg/kg	IEC 62321-6:2015, GC-MS	N.D.	5	--
Tribromodiphenyl ether	mg/kg	IEC 62321-6:2015, GC-MS	N.D.	5	--
Tetrabromodiphenyl ether	mg/kg	IEC 62321-6:2015, GC-MS	N.D.	5	--
Pentabromodiphenyl ether	mg/kg	IEC 62321-6:2015, GC-MS	N.D.	5	--
Hexabromodiphenyl ether	mg/kg	IEC 62321-6:2015, GC-MS	N.D.	5	--
Heptabromodiphenyl ether	mg/kg	IEC 62321-6:2015, GC-MS	N.D.	5	--
Octabromodiphenyl ether	mg/kg	IEC 62321-6:2015, GC-MS	N.D.	5	--
Nonabromodiphenyl ether	mg/kg	IEC 62321-6:2015, GC-MS	N.D.	5	--
--Decabromodiphenyl ether	mg/kg	IEC 62321-6:2015, GC-MS	N.D.	5	--
Dibutyl Phthalate(DBP)	mg/kg	IEC 62321-8 (111/321/CD), GC-MS	N.D.	50	1000
Benzylbutyl Phthalate(BBP)	mg/kg	IEC 62321-8 (111/321/CD), GC-MS	N.D.	50	1000
Di-(2-ethylhexyl) Phthalate(DEHP)	mg/kg	IEC 62321-8 (111/321/CD), GC-MS	N.D.	50	1000
Diisobutyl phthalate (DIBP)	mg/kg	IEC 62321-8 (111/321/CD), GC-MS	N.D.	50	1000

Test Result(No.22):

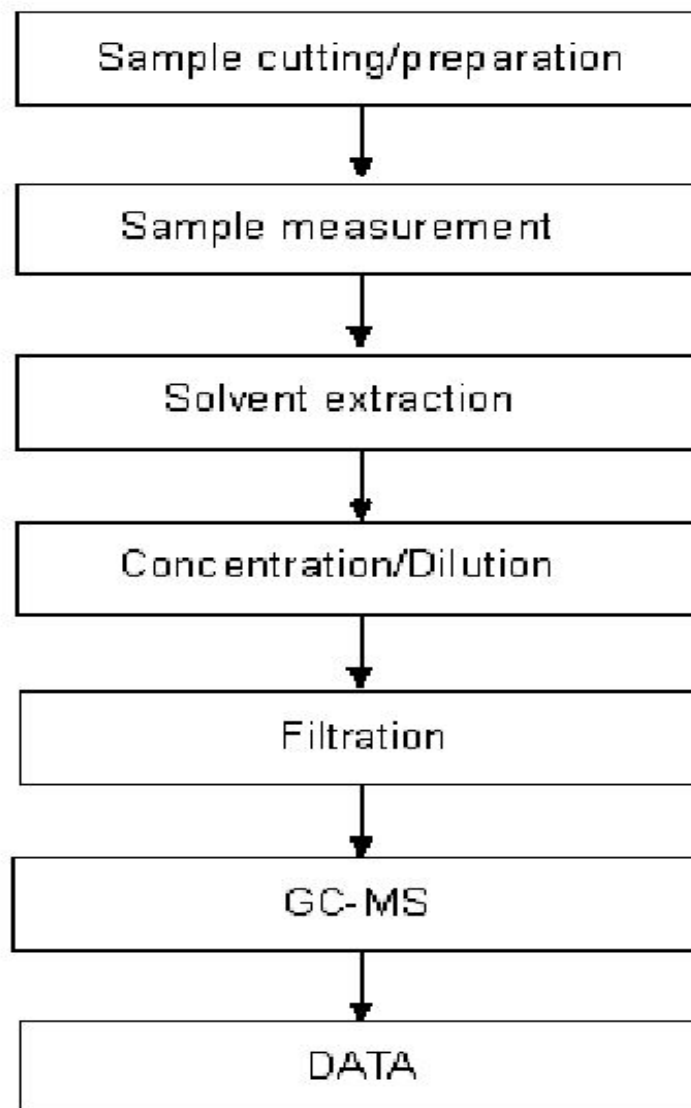
Test Item(s)	Unit	Test Method (Reference)	Result	MDL	Limit
Cadmium(Cd)	mg/kg	IEC 62321-5:2013, ICP-OES	N.D.	2	100
Lead(Pb)	mg/kg	IEC 62321-5:2013, ICP-OES	N.D.	2	1000
Mercury(Hg)	mg/kg	IEC 62321-4:2013, ICP-OES	N.D.	2	1000
Hexavalent Chromium(CrVI)	mg/kg	IEC 62321:2008, UV-Vis	N.D.	2	1000
Sum of PBBs	mg/kg	IEC 62321-6:2015, GC-MS	N.D.	--	1000
Monobromobiphenyl	mg/kg	IEC 62321-6:2015, GC-MS	N.D.	5	--
Dibromobiphenyl	mg/kg	IEC 62321-6:2015, GC-MS	N.D.	5	--
Tribromobiphenyl	mg/kg	IEC 62321-6:2015, GC-MS	N.D.	5	--
Tetrabromobiphenyl	mg/kg	IEC 62321-6:2015, GC-MS	N.D.	5	--
Pentabromobiphenyl	mg/kg	IEC 62321-6:2015, GC-MS	N.D.	5	--

Hexabromobiphenyl	mg/kg	IEC 62321-6:2015, GC-MS	N.D.	5	--
Heptabromobiphenyl	mg/kg	IEC 62321-6:2015, GC-MS	N.D.	5	--
Octabromobiphenyl	mg/kg	IEC 62321-6:2015, GC-MS	N.D.	5	--
Nonabromobiphenyl	mg/kg	IEC 62321-6:2015, GC-MS	N.D.	5	--
Decabromobiphenyl	mg/kg	IEC 62321-6:2015, GC-MS	N.D.	5	--
Sum of PBDEs	mg/kg	IEC 62321-6:2015, GC-MS	N.D.	5	1000
Monobromodiphenyl ether	mg/kg	IEC 62321-6:2015, GC-MS	N.D.	5	--
Dibromodiphenyl ether	mg/kg	IEC 62321-6:2015, GC-MS	N.D.	5	--
Tribromodiphenyl ether	mg/kg	IEC 62321-6:2015, GC-MS	N.D.	5	--
Tetrabromodiphenyl ether	mg/kg	IEC 62321-6:2015, GC-MS	N.D.	5	--
Pentabromodiphenyl ether	mg/kg	IEC 62321-6:2015, GC-MS	N.D.	5	--
Hexabromodiphenyl ether	mg/kg	IEC 62321-6:2015, GC-MS	N.D.	5	--
Heptabromodiphenyl ether	mg/kg	IEC 62321-6:2015, GC-MS	N.D.	5	--
Octabromodiphenyl ether	mg/kg	IEC 62321-6:2015, GC-MS	N.D.	5	--
Nonabromodiphenyl ether	mg/kg	IEC 62321-6:2015, GC-MS	N.D.	5	--
--Decabromodiphenyl ether	mg/kg	IEC 62321-6:2015, GC-MS	N.D.	5	--
Dibutyl Phthalate(DBP)	mg/kg	IEC 62321-8 (111/321/CD), GC-MS	N.D.	50	1000
Benzylbutyl Phthalate(BBP)	mg/kg	IEC 62321-8 (111/321/CD), GC-MS	N.D.	50	1000
Di-(2-ethylhexyl) Phthalate(DEHP)	mg/kg	IEC 62321-8 (111/321/CD), GC-MS	N.D.	50	1000
Diisobutyl phthalate (DIBP)	mg/kg	IEC 62321-8 (111/321/CD), GC-MS	N.D.	50	1000

- Note: 1. mg/kg= ppm
 2. N.D.= No Detection(<MDL)
 3. MDL = Method Detection Limit
 4. -- = No Testing

ATTACHMENT: Cd/Pb/Hg/Cr⁶⁺/PBBs&PBDEs Flow Chart

ATTACHMENT: Phthalate Testing Flow Chart

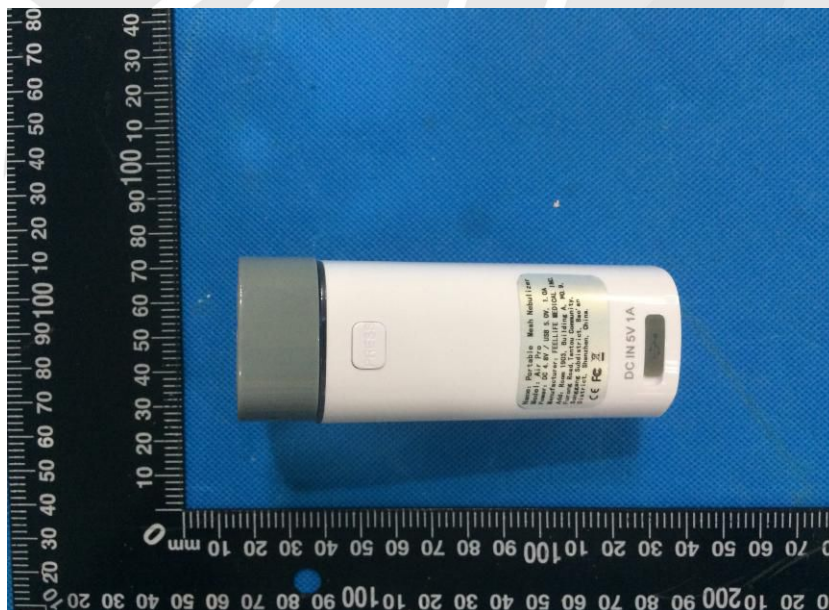


Sample photo:

EUT Photo 1



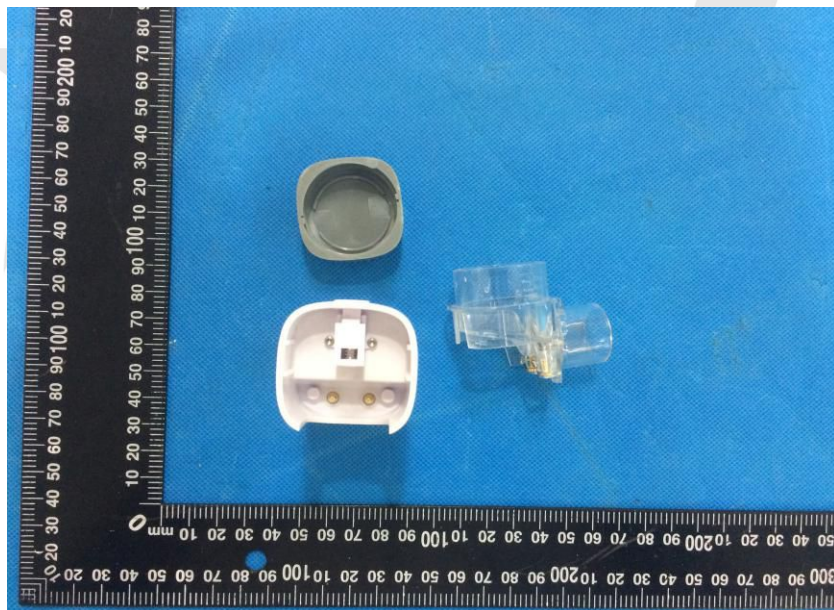
EUT Photo 2



EUT Photo 3



EUT Photo 4



****End of Report****